



Ventilation panels combine with our ultra-dry mesh technology to create our coolest, most breathable polo. Stretch gussets add extra mobility.

- 4-ounce, 100% polyester mini pique on body
- 4.4-ounce, 94/6 poly/spandex stretch mesh at shoulders, sleeves, back and side panels
- Gently contoured silhouette
- Tag-free label
- Flat knit collar
- 5-button placket with dyed-to-match buttons
- Raglan sleeves

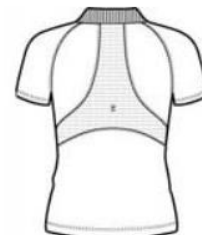
**Due to the nature of 100% polyester performance fabrics, special care must be taken throughout the screen printing process.*

CARE INSTRUCTIONS

Machine wash cold with like colors, only non-chlorine bleach when needed, tumble dry low, do not use softener, remove promptly, cool iron if necessary.



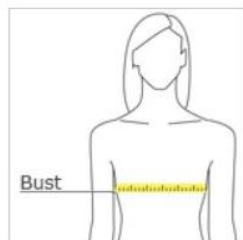
front



back

Tips For Effectively Screen Printing Polyester Fabrics

HOW TO MEASURE



BUST

With arms down at sides, measure around the upper body, under arms and around the fullest part of the bust.

SIZE CHART

	XS	S	M	L	XL	XXL	3XL	4XL
Size	2	4/6	8/10	12/14	16/18	20/22	24/26	28/30
Bust	32-34	35-36	37-38	39-41	42-44	45-47	48-51	52-55

COLOR INFORMATION



Black
PMS NTR BLACK CPMS 7454C



Carolina Blue
PMS 2217C



Dark Green
PMS 2217C



Engine Red
PMS 703C



Maroon
PMS 504C



Navy
PMS 5255C



Pink Raspberry
PMS 7425C



Royal
PMS 654C



Steel
PMS C1 GY 11 C



White



Ventilation panels combine with our ultra-dry mesh technology to create our coolest, most breathable polo. Stretch gussets add extra mobility.

- 4-ounce, 100% polyester mini pique on body
- 4.4-ounce, 94/6 poly/spandex stretch mesh on side panels and locker patch
- Tag-free label
- Flat knit collar
- 3-button placket with dyed-to-match buttons

**Due to the nature of 100% polyester performance fabrics, special care must be taken throughout the screen printing process.*

CARE INSTRUCTIONS

Machine wash cold with like colors. Non-chlorine bleach. Do not use softeners. Tumble dry low. Remove promptly. Cool iron if needed.



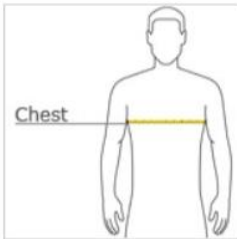
front



back

[Tips For Effectively Screen Printing Polyester Fabrics](#)

HOW TO MEASURE



CHEST

With arms down at sides, measure around the upper body, under arms and over the fullest part of the chest.

SIZE CHART

	XS	S	M	L	XL	2XL	3XL	4XL
Chest	32-34	35-37	38-40	41-43	44-46	47-49	50-53	54-57

COLOR INFORMATION



Black
PMS NTR BLACK CPMS 7454C



Carolina Blue
PMS 2217C



Dark Green
PMS 703C



Engine Red
PMS 504C



Maroon
PMS 5255C



Navy
PMS 654C



Royal
PMS 453 C



Sandstone
PMS C1 GY 11 C



Steel
PMS C1 GY 11 C



White



Nike Dri-FIT Heather Polo. 474231



Stay comfortable before, during and after the round in this sophisticated style. Dri-FIT moisture management technology helps keep you dry and focused. Contrast stitch details on the seams and collar. Other features include a self-fabric collar, three-button placket and open hem sleeves. A contrast heat transfer Swoosh design trademark is on the left sleeve. Made of 4-ounce, 100% polyester heathered jersey Dri-FIT fabric.

CARE INSTRUCTIONS

[Tips For Effectively Screen Printing Polyester Fabrics](#)

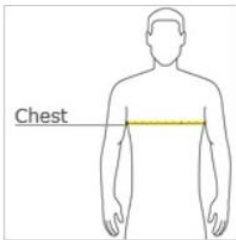


front



back

HOW TO MEASURE



CHEST

With arms down at sides, measure around the upper body, under arms and over the fullest part of the chest.

SIZE CHART

	XS	S	M	L	XL	2XL	3XL	4XL
Chest	32-35	35 - 37 1/2	37 1/2 - 41	41 - 44	44 - 48 1/2	48 1/2 - 53 1/2	53 1/2 - 58	58 - 63

COLOR INFORMATION



Black Heather
PMS COOL GRAY
11C



Carbon Heather
PMS 430C



Light Game Royal
Heather
PMS 7682C



Nike Ladies Dri-FIT Heather Polo. 474455



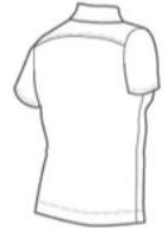
Stay comfortable before, during and after the round in this sophisticated style. Dri-FIT moisture management technology helps keep you dry and focused. Contrast stitch details on the seams and collar. Tailored for a feminine fit. Other features include a self-fabric collar, three-button placket and open hem sleeves. A contrast heat transfer Swoosh design trademark is on the left hem. Made of 4-ounce, 100% polyester heathered jersey Dri-FIT fabric.

CARE INSTRUCTIONS

[Tips For Effectively Screen Printing Polyester Fabrics](#)

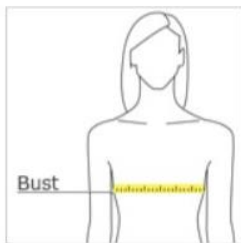


front



back

HOW TO MEASURE



BUST

With arms down at sides, measure around the upper body, under arms and around the fullest part of the bust.

SIZE CHART

	S	M	L	XL	2XL
Size	4/6	8/10	12/14	16/18	20
Bust	32 1/2 - 35 1/2	35 1/2 - 38	38 - 41	41 - 44 1/2	44 1/2 - 48 1/2

COLOR INFORMATION



Black Heather
PMS COOL GRAY
11C



Carbon Heather
PMS 430C



Light Game Royal
Heather
PMS 7682C

Port Authority® Ladies Concept 3/4-Sleeve Soft Split Neck Top. LK5433



This contemporary top combines fabrics for work-to-weekend versatility.

- 4.4-ounce, 62/33/5 poly/rayon/spandex jersey knit (front and sleeves)
- 3.3-ounce, 69/31 rayon/poly woven (back)
- Split neck opening
- Slight drop shoulder
- Back seam
- Side vents
- Drop tail hem

CARE INSTRUCTIONS

Machine wash cold on gentle cycle, tumble dry low, do not bleach, warm iron if necessary.

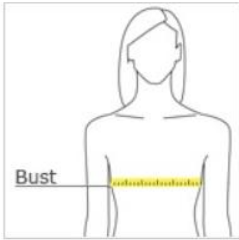


front



back

HOW TO MEASURE



BUST
With arms down at sides, measure around the upper body, under arms and around the fullest part of the bust.

SIZE CHART

	XS	S	M	L	XL	XXL	3XL	4XL
Size	2	4/6	8/10	12/14	16/18	20/22	24/26	28/30
Bust	32-34	35-36	37-38	39-41	42-44	45-47	48-51	52-55

COLOR INFORMATION



Black
PMS NTR BLACK CPMS 2378C



Dusty Blue
PMS 286C



Grey Smoke
PMS 426C



Ivory Chiffon
PMS 9043C



Created from super soft jersey knit, this layerable cardigan fights indoor chill and instantly upgrades any corporate look.

- 4.4-ounce, 62/33/5 poly/rayon/spandex jersey knit
- Open front
- Shawl collar
- Slightly sloping front hem

CARE INSTRUCTIONS

Machine wash cold on gentle cycle, tumble dry low, do no bleach, warm iron if necessary.

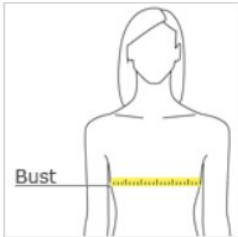


front



back

HOW TO MEASURE



BUST

With arms down at sides, measure around the upper body, under arms and around the fullest part of the bust.

SIZE CHART

	XS	S	M	L	XL	XXL	3XL	4XL
Size	2	4/6	8/10	12/14	16/18	20/22	24/26	28/30
Bust	32-34	35-36	37-38	39-41	42-44	45-47	48-51	52-55

COLOR INFORMATION



Black
PMS NTR BLACK CPMS 2378C



Dusty Blue



Grey Smoke
PMS 426C



This soft, flowy tunic has professional edge with its woven front and knit back.

- 4.4-ounce, 62/33/5 poly/rayon/spandex jersey knit (sleeves and back)
- 3.3-ounce, 69/31 rayon/poly woven (front, back yoke and sleeve tabs)
- 3-button henley placket with dyed-to-match buttons
- Bust darts
- Inverted back pleats
- Roll sleeves with button tabs
- Longer tunic length
- Rounded hem

CARE INSTRUCTIONS

Machine wash cold on gentle cycle, tumble dry low, do no bleach, warm iron if necessary.

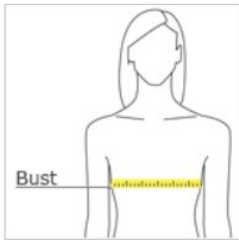


front



back

HOW TO MEASURE



BUST
With arms down at sides, measure around the upper body, under arms and around the fullest part of the bust.

SIZE CHART

	XS	S	M	L	XL	XXL	3XL	4XL
Size	2	4/6	8/10	12/14	16/18	20/22	24/26	28/30
Bust	32-34	35-36	37-38	39-41	42-44	45-47	48-51	52-55

COLOR INFORMATION



Black
PMS NTR BLACK CPMS 2378C



Dusty Blue



Grey Smoke
PMS 426C



Ivory Chiffon
PMS 9043C

Van Heusen - Women's Coolest Comfort Check Shirt - 13V0411



3.4 oz., 60/40 cotton/polyester
Wrinkle-free blend with performance properties
Point collar
Single-needle stitching on armholes
Double-needle stitching on side seams
Adjustable cuffs
No chest pocket

	S	M	L	XL	2XL
Colors					
Body Length	28 1/2	29	29 1/2	30	30 1/2
Chest Width	42	44	47	50 1/2	54 1/2



Van Heusen - Coolest Comfort Check Shirt - 13V0410



3.4 oz., 60/40 cotton/polyester
Wrinkle-free blend with performance properties
Button-down collar
Single-needle stitching on armholes
Double-needle stitching on side seams
Adjustable cuffs
Left chest pocket

	S	M	L	XL	2XL	3XL
Colors						
Body Length	32 1/4	32 1/4	32 1/4	32 1/4	32 1/4	32 1/4
Body Width	45	49	53	57	61	65



Red House® Ladies Windowpane Plaid Non-Iron Shirt. RH71



Crisp tailoring translated in a modern color-on-color windowpane pattern make this shirt striking. Our enhanced non-iron finish keeps you looking composed throughout your workday. Created from 3.6-ounce, 100% cotton, this shirt has pucker-free single-needle tailoring, Red House engraved buttons and monogram on right sleeve placket. Open collar, covered button-front placket for a seamless look, front and back darts. Three-button notched cuffs.

CARE INSTRUCTIONS

Machine wash warm with like colors only. Non-chlorine bleach when needed. Tumble dry low. Warm iron if necessary.

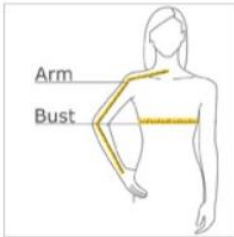


front



back

HOW TO MEASURE



BUST

With arms down at sides, measure around the upper body, under arms and around the fullest part of the bust.

ARM

Place hand on hip. Start at the center of the back of the neck and measure across the shoulder, to the elbow, and then down to the wrist.

SIZE CHART

	XS	S	M	L	XL	XXL	3XL	4XL
Size	2	4/6	8/10	12/14	16/18	20/22	24/26	28/30
Bust	32-34	35-36	37-38	39-41	42-44	45-47	48-51	52-55
Arm	30 - 30 3/4	30 3/4 - 31 1/2	31 1/2 - 32	32 - 32 1/2	32 1/2 - 33	33 - 33 3/8	33 3/8 - 33 3/4	33 3/4 - 34 1/2

COLOR INFORMATION



Blue
PMS 2122C



Dove Grey
PMS 5305C



Thistle Purple
PMS 2635C

Red House® Windowpane Plaid Non-Iron Shirt. RH70



Crisp tailoring translated in a modern color-on-color windowpane pattern make this shirt striking. Our enhanced non-iron finish keeps you looking composed throughout your workday. Created from 3.6-ounce, 100% cotton, this shirt has pucker-free single-needle tailoring, Red House engraved buttons and monogram on right sleeve placket. Versatile collar that can be worn open or buttoned down. Left chest notched pocket. Adjustable two-button notched cuffs.

CARE INSTRUCTIONS

Machine wash warm with like colors only. Non-chlorine bleach when needed. Tumble dry low. Warm iron if necessary.

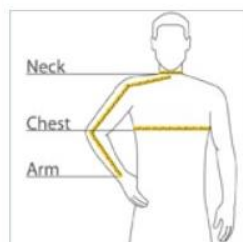


front



back

HOW TO MEASURE



CHEST

With arms down at sides, measure around the upper body, under arms and over the fullest part of the chest.

NECK

Measure around the base of the neck, inserting a finger or two between the tape and neck for comfort.

ARM

Place hand on hip. Start at the center of the back of the neck and measure across the shoulder, to the elbow, and then down to the wrist.

SIZE CHART

	XS	S	M	L	XL	2XL	3XL	4XL
Chest	32-34	35-37	38-40	41-43	44-46	47-49	50-53	54-57
Neck	14 1/2 - 15	15 - 15 1/2	15 1/2 - 16	16 - 16 1/2	16 1/2 - 17	17 - 17 1/2	17 1/2 - 18	18 - 18 1/2
Arm	30.5	32	34	35	36.5	37.5	38.5	39.5

COLOR INFORMATION



Blue
PMS 2122C



Dove Grey
PMS 5305C



Thistle Purple
PMS 2635C

NORTH END.

88187 prime

Ash City - North End Men's Radar Quarter-Zip Performance Long-Sleeve Top

MSRP (A): \$34.98

Features

- translucent zipper with contrast treading
- inside placket with chin guard
- subtle contrast coverstitch details at raglan and back sleeves
- underarm gusset
- decorative reflective print on left front and back

Fabric

- 100% polyester birdseye mesh, 4.7 oz./yd2/160gsm
- Moisture wicking, antimicrobial and UV protection performance

Sizes

- S - 3XL

Product Specifications

	S	M	L	XL	2XL	3XL
BODY WIDTH	21	22.5	24	25.5	27	28.5
FULL BODY LENGTH	27.5	28.75	29.5	30.25	31	31.75
SLEEVE LENGTH	34	35	36	37	37.75	38.5

Size Chart

	S	M	L	XL	2XL	3XL
CHEST	35-38	39-41	42-45	46-49	50-52	53-56



BACK VIEW



SIDE VIEW



5 Available Colors



Black

PMS
procblckc



Blk/ Cl Red

PMS
procblckc



Blk/ Cmps Gold

PMS
procblckc



Blk/ Tru Royal

PMS
procblckc



Classic Navy

PMS
533c

NORTH END.

78187 prime

Ash City - North End Ladies' Radar Quarter-Zip Performance Long-Sleeve Top

MSRP (A): \$34.98

Features

- translucent zipper with contrast treading
- inside placket with chin guard
- subtle contrast coverstitch details at raglan and back sleeves
- underarm gusset
- decorative reflective print on left front and back

Fabric

- 100% polyester birdseye mesh, 4.7 oz./yd2/160gsm
- Moisture wicking, antimicrobial and UV protection performance

Sizes

- XS - 3XL

Product Specifications

	XS	S	M	L	XL	2XL	3XL
BODY WIDTH	17.75	18.75	19.75	21.25	22.75	24.25	25.75
FULL BODY LENGTH	24	24.75	25.5	26.25	27	27.75	27.75
SLEEVE LENGTH	30.5	31	32	33	34	34.63	35.25

Size Chart

	XS	S	M	L	XL	2XL	3XL
CHEST	31-32	33-35	36-38	39-42	43-45	46-49	50-53



BACK VIEW



SIDE VIEW



5 Available Colors



Black

PMS
procblckc



Blk/ Cl Red

PMS
procblckc



Blk/ Cmps Gold

PMS
procblckc



Blk/ Tru Royal

PMS
procblckc



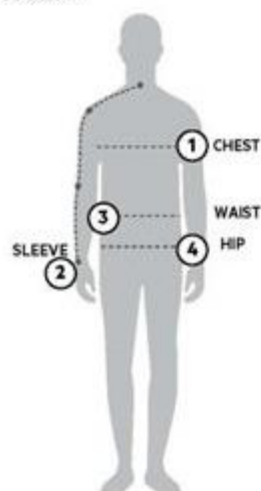
Classic Navy

PMS
533c

STORMTECH SIZING CHART

BASED ON YOUR BODY MEASUREMENTS

MEN'S SIZING



To select the best size for you, please follow these simple steps:

- Most important measurement:**
Take your Chest/Bust measurement from just under your arm at the fullest part of the chest
- Take your Sleeve length from the back base of the neck across the shoulder and around the elbow to your wrist
- Take your Waist measurement at the narrowest point around your natural waistline.
- Take your Hip measurement at the fullest part of your body below the waist.

When measurements fall between two sizes:

The size selection should be based on fit preference: Select lower size for a closer to body fit or the larger size for a more relaxed fit. When in doubt, we strongly recommend ordering a size sample.

WOMEN'S SIZING



KXV-1 | MEN'S NAUTILUS QUILTED VEST

MEN'S SIZING CHART - YOUR BODY MEASUREMENTS

SIZE	XS	S	M	L	XL	2XL	3XL	4XL	5XL
Chest ①	N/A	35"-38" [89-96.5cm]	38"-41" [96.5-104cm]	41"-44" [104-112cm]	44"-47" [112-119cm]	47"-50" [119-127cm]	50"-53" [127-134.5cm]	53"-56" [134.5-142cm]	56"-59" [142-150cm]
Sleeve Length ②	N/A	33"-34" [84-86.5cm]	34"-35" [86.5-89cm]	35"-36" [89-91.5cm]	36"-37" [91.5-94cm]	37"-38" [94-96.5cm]	38"-38.5" [96.5-97.75cm]	38.5"-39" [97.75cm-99cm]	39"-39.5" [99-100.25cm]
Waist ③	N/A	29"-32" [73.5-81cm]	32"-35" [81-89cm]	35"-38" [89-96.5cm]	38"-41" [96.5-104cm]	41"-44" [104-112cm]	44"-47" [112-119cm]	47"-50" [119-127cm]	50"-53" [127-134.5cm]
Hip ④	N/A	34"-37" [86-94cm]	37"-40" [94-101.5cm]	40"-43" [101.5-109cm]	43"-46" [109-117cm]	46"-49" [117-124.5cm]	49"-52" [124.5-132cm]	52"-55" [132-140cm]	55"-58" [140-147cm]

KXV-1W | WOMEN'S NAUTILUS QUILTED VEST

WOMEN'S SIZING CHART - YOUR BODY MEASUREMENTS

SIZE	XS	S	M	L	XL	2XL
Bust ①	29"-32" [73.5-81cm]	32"-35" [81-89cm]	35"-38" [89-96.5cm]	38"-41" [96.5-104cm]	41"-44" [104-112cm]	44"-47" [112-119cm]
Sleeve Length ②	30"-31" [76-79cm]	31"-32" [79-81.5cm]	32"-33" [81.5-84cm]	33"-33.5" [84-85cm]	33.5"-34" [85-86.5cm]	34"-34.5" [86.5-87.75cm]
Waist ③	22"-25" [56-63.5cm]	25"-28" [63.5-71cm]	28"-31" [71-79cm]	31"-34" [79-86cm]	34"-37" [86-94cm]	37"-40" [94-101.5cm]
Hip ④	31.5"-34.5" [80-87.5cm]	34.5"-37.5" [87.5-95cm]	37.5"-40.5" [95-103cm]	40.5"-43.5" [103-110.5cm]	43.5"-46.5" [110.5-118cm]	46.5"-49.5" [118-126cm]

FIT GUIDE

FITTED REGULAR RELAXED

FITS TRUE TO SIZE

Neither slim nor oversized. Universal, easy fit for comfortable range of motion.

For more information on this and other Stormtech styles, please contact us at info@stormtech.ca

STORMTECH

Landway Size Charts

Inches	S		L	XL	XXL	3XL	4XL	
Body Length (Front)	25.5	26.5	27.5	28.5	29.5	30.5	31.5	32.5
Chest Width	23.5	24.5	25.5	26.5	28	29	30	31
Bottom Hem Length	21	22	23	24	25	26	27	28
Shoulder Width	17.5	18	18.5	19	19.5	20	20.5	21

Ladies Landway Size Charts

Inches	XS	s	M	L	XL	XXL	3XL
Body Length (Front)	24	25	26	27	28	29	30
Chest Width	19.5	20.5	21.5	22.5	23.5	24.5	25.5
Bottom Hem Length	19.5	20.5	21.5	22.5	23.5	24.5	25.5
Shoulder Width	15.5	16	16.5	17	17.5	18	18.5

DEVON & JONES®

DG797

Devon & Jones Men's Newbury Mélange Fleece Vest

MSRP (A): \$36.98

Features

- Center front coil zipper with semi autolock slider
- Lower front pockets with zippers
- Tonal coverstitch details at shoulders

Fabric

- body: 6.49 oz./yd2 / 220 gsm, 100% polyester mélange jersey bonded with fleece

Sizes

- S - 4XL

Product Specifications

	S	M	L	XL	2XL	3XL	4XL
BODY WIDTH	20.50	22	24	26	27.50	29.50	31.50
FULL BODY LENGTH	28.50	29.50	30.50	31.50	32.50	33	33.50
NECK CIRCUMFERENCE	18	19	20	21	22	23	24

Size Chart

	S	M	L	XL	2XL	3XL	4XL
CHEST	35-38	39-41	42-45	46-49	50-52	53-56	57-60



BACK VIEW



SIDE VIEW



5 Available Colors



Black
Heather
PMS
procblack



Dark Grey
Heather
PMS
2332c



Forest
Heather
PMS
5535c



French Blue
Hthr
PMS
2386c



Navy Heather
PMS
532c

DEVON & JONES®

DG797W

Devon & Jones Ladies' Newbury Mélange Fleece Vest

MSRP (A): \$36.98

Features

- Center front coil zipper with semi autolock slider
- Lower front pockets with zippers

Fabric

- body: 6.49 oz./yd2 / 220 gsm, 100% polyester mélange jersey bonded with fleece

Sizes

- XS - 3XL

Product Specifications

	XS	S	M	L	XL	2XL	3XL
BODY WIDTH	17	18.50	20	22	23.50	25.50	27.50
FULL BODY LENGTH	24	25	26	27	28	29	30
NECK CIRCUMFERENCE	16.25	16.88	17.50	18.13	18.75	19.38	20

Size Chart

	XS	S	M	L	XL	2XL	3XL
CHEST	31-32	33-35	36-38	39-42	43-45	46-49	50-53



BACK VIEW



SIDE VIEW



6 Available Colors



Black
Heather
PMS
procblackc



Dark Grey
Heather
PMS
2332c



Forest
Heather
PMS
5535c



French Blue
Heather
PMS
2386c



Grape
Heather
PMS
7675c



Navy
Heather
PMS
532c

TRI-MOUNTAIN
Gold™

TRI-MOUNTAIN®
performance

TRI-MOUNTAIN®

TMR®
TRI-MOUNTAIN RACEWEAR

SIZE CHART

MEN	XS	S	M	L	XL	2XL	3XL	4XL	5XL	6XL
Chest (inches)	31-33	35-37	39-41	43-45	47-49	51-53	55-57	59-61	63-65	67-69
Waist (inches)	22-24	26-28	30-32	34-36	38-40	42-44	46-48	50-52	54-56	58-60
WOMEN	XS	S	M	L	XL	2XL	3XL	4XL		
Dress Size	2-4	6-8	10-12	14-16	18-20	22-24	26-28	30-32		
YOUTH	XS	S	M	L	XL					
	4-5	6-8	10-12	14-16	18-20					

*Tall Sizes are 2" longer in sleeve and body lengths.

Charles River Apparel Size Equivalence Chart

These sizes and body measurements are intended as a guide to assist with sizing - these are not garment measurements. Locate your measurements below and then the chart will tell you the approximate Charles River Apparel (CRA) size you should fit into. For style specific measurements visit our website at www.charlesriverapparel.com and click on the individual style to view the garment's specs.

Mens/Unisex Jackets

CHEST	SLEEVE	CRA SIZE
32"	29" - 30"	XXS
34"	30" - 31"	XS
36"	31" - 32"	S
38" - 40"	32" - 33"	M
42" - 44"	34" - 34½"	L
46" - 48"	35" - 35½"	XL
50" - 52"	36" - 36½"	2XL
54" - 56"	37" - 37½"	3XL
58"	38"	4XL
60"	38½"	5XL
42" - 44"	35" - 35½"	LT
46" - 48"	36" - 36½"	XLT
50" - 52"	37" - 37½"	2XLT
54" - 56"	38" - 38½"	3XLT
58"	39"	4XLT
60"	39½"	5XLT

Women's Jackets

CHEST	SLEEVE	CRA SIZE
32" - 33"	29" - 29½"	XS(2/4)
34" - 35"	29½" - 30"	S(6/8)
36" - 38"	30" - 30½"	M(10/12)
39" - 41"	30½" - 31"	L(14/16)
42" - 44"	31" - 31½"	XL(18/20)
46" - 48"	31½" - 32"	2XL(22/24)

Women's Pants

WAIST	INSEAM	HIP	CRA SIZE
24" - 25"	30½"	35-36"	XS(2/4)
26" - 27"	30½"	37-38"	S(6/8)
28" - 29"	30½"	39-40"	M(10/12)
30" - 33"	30½"	41-43"	L(14/16)
34" - 36"	30½"	44-47"	XL(18/20)
37" - 40"	30½"	48-51"	2XL(22/24)

SIZE CHART FOR FLEXJET NORTH END JACKET

MEN	S	M	L	XL	XXL	3X
Chest	46 1/4	49 1/4	52 1/4	56 1/4	60 1/4	64 1/4
Back Length (from center back)	29 1/4	29 7/8	30 1/2	31 1/8	31 3/4	32 3/8
Sleeve Length (from center back)	34 1/2	35 1/2	36 1/2	37 1/2	28 1/2	39 1/2

LADIES	XS (2-4)	S (6-8)	M (10-12)	L (14-16)	XL (18)	XXL (20)
Chest	37 1/4	39 1/4	41 1/4	44 1/4	47 1/4	50 1/4
Back Length (from center back)	23 1/4	23 7/8	24 1/2	25 1/8	25 3/4	26 3/8
Sleeve Length (from center back)	31	32	33	34	35	36

**DRI•DUCK****Dri Duck - Size Chart**

GENDER	SIZES	S	M	L	XL	2XL	3XL	4XL
Mens Sleeve Length		21.25 - 35.5	22.25 - 36.5	23.25 - 37.5	24.25 - 38.5	25.25 - 39.5	26.375 - 40.5	40.5
Mens Body Length		25.5 - 31	26.5 - 32	27.5 - 33	28.5 - 34	29.5 - 35	30 - 36	
Mens Chest		40 - 46	44 - 49	48 - 52	52 - 56	56 - 60	59 - 64	68
Women Sleeve Length		30.25 - 31.5	31 - 32.5	31.75 - 33.5	32.5 - 34	33.25 - 34	34	
Women Body Length		25	26	27	28	29		
Women Chest		39	42	45	48	51	54	